

MeteoSense 2.0 netsens

MeteoSense 2.0 belongs to the new generation of professional weather stations, combining high reliability and unsurpassed performance. Real-time data gathered from sensors are transmitted using reliable GPRS technology, and accessed worldwide through the simple, intuitive Netsens LiveData web interface, using any mobile or desktop device.



Wind sensor:
Average speed/gust,
Wind direction

Leaf wetness:
Upper and lower leaf
wetness

Solar radiation:
Visible, PAR and UV

**Air temperature and
humidity:**
High precision digital
sensor, with solar shield.
Dew point calculation

Main unit:
Outdoor housing,
embedded GPRS modem,
SD card slot, internal
electronic battery charger

Rain collector:
Cumulated rain and rain
event indication

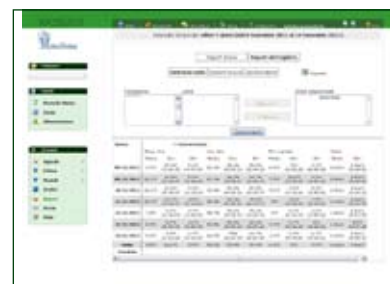
Solar panel:
Integrated high efficiency
solar panel powering

Hardware:
Steel and aluminum
mounting pole and
hardware.

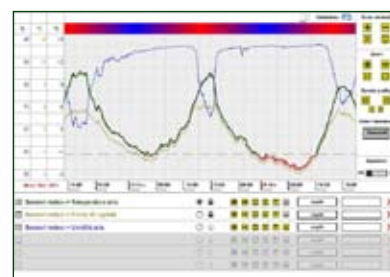
Soil sensors:
Up to 4 digital soil moisture
and temperature, or soil
conductivity sensors



*Access your data in real time from any
desktop, notebook, smartphone or tablet,
using a powerful user interface*



*Dynamic report generation with
various format data export*



*Graphical sensor data
representation with "zoom" and
multi channel display*

How it works:

Data are sent in real time to Netsens LiveData center, and can be accessed using a standard Internet connection, from any laptop, notebook, smartphone or tablet.

Our **LiveData** software platform displays all data in a clear and intuitive way; Netsens offers "turn-key" solutions including the SIM card (available in most of the Countries), thus resulting in less complexity and lower cost to the Customer.



*Wind direction analysis with polar
diagram representation*

MeteoSense 2.0 netsens

Technical specification

Communication interface: GPRS quadriband / LAN / RTU Modbus

Connectivity mode: "Always on", TCP/IP protocol (GPRS and LAN)

On board memory: SD Card slot

Local communication interface: USB

Display: alphanumeric LCD 4 characters

Power supply: 12 VDC, or 220 VAC with external adapter

Electronic battery charger integrated, for solar panels

Power consumption: < 1W with GPRS connection active

Battery operation: up to 50 days without external recharge

Environmental protection: IP 56



Sensors specification

Wind sensor

Wind speed: 1-67 m/s, accuracy 5%

Direction: 0-360°, accuracy 7°



Rain collector

Resolution: 0.2 mm

Principle: tipping bucket



Thermo-hygrometer

Temperature: -25 +85 °C, accur. 0.5°C

Humidity: 0-100 %RH, accuracy 3%

Dew point calculation

Solar shield included



Soil moisture and temperature

Accuracy: 2%

Measuring range: from 0% to saturation

Operating range: - 40 + 60 °C

Up to 4 sensors on the same station



Barometric pressure

Measuring range: 500 - 1100 hPa

Accuracy: 0.4 hPa (-10 to +70°C)



Soil conductivity (EC):

Measuring range: 0 to 15 dS/m

Operating temperature: 0 to +50 °C



Leaf wetness sensor

Two output channels (upper and lower leaf side)

Measuring range: 0 - 100 %

Operating range: - 40 + 60 °C



Solar radiation sensor

Visible radiation: 0-1800 W/m2

Accuracy: 5% FS

Operating range: -40 +65 °C



Also available: First class and Second class pyranometers, PAR, UVA/UVB

Installation tools

Installation pole: mounting pole with full installation kit, including sensor tools.

Solar kit option: solar panel with sealed, rechargeable battery and outdoor steel housing.

Power supply option: 110V/220V external power adapter. Optional back-up battery.



**Check the
installation video**

netsens



Made in Italy



Since 2004